

EPSON[®]
EXCEED YOUR VISION

Epson[®] **SureColor**[®] **Network Guide**

Copyright and Trademarks

No part of this publication may be reproduced, stored in a retrieval system, or transmitted in any form or by any means, mechanical, photocopying, recording, or otherwise, without the prior written permission of Seiko Epson Corporation. No patent liability is assumed with respect to the use of the information contained herein. Neither is any liability assumed for damages resulting from the use of the information contained herein.

Neither Seiko Epson Corporation nor its affiliates shall be liable to the purchaser of this product or third parties for damages, losses, costs, or expenses incurred by purchaser or third parties as a result of: accident, misuse, or abuse of this product or unauthorized modifications, repairs, or alterations to this product, or (excluding the U.S.) failure to strictly comply with Seiko Epson Corporation's operating and maintenance instructions.

Seiko Epson Corporation and its affiliates shall not be liable against any damages or problems arising from the use of any options or any consumable products other than those designated as Original Epson Products or Epson Approved Products by Seiko Epson Corporation.

Microsoft[®], Windows[®], and Windows Vista[®] are registered trademarks of Microsoft Corporation.

Apple[®], Mac[®], Mac OS[®], OS X[®], and Bonjour[®] are registered trademarks of Apple, Inc.

EPSON, EPSON EXCEED YOUR VISION, EXCEED YOUR VISION, and their logos are registered trademarks of Seiko Epson Corporation.

Adobe[®], Reader[®], and Acrobat[®] are trademarks of Adobe Systems Incorporated, which may be registered in certain jurisdictions.

This product includes RSA BSAFE[®] Cryptographic software of EMC Corporation. RSA and BSAFE are registered trademarks or trademarks of EMC Corporation in the United States and other countries.



This product contains Runtime Modules of IBM Rational Rhapsody, Copyright IBM Corporation 2008. All Rights Reserved.

General Notice: Other product names used herein are for identification purposes only and may be trademarks of their respective owners. Epson disclaims any and all rights in those marks.

This information is subject to change without notice.

Copyright © 2015 Epson America, Inc.

10/15

CPD-39090R2

Copyright and Trademarks

Safety Instructions

Warning, Caution, Important, and Note	7
---	---

Introduction

About Your Printer	8
About This Guide	8
Operating Environment	9
Features of the Network Interface	9
Network Interface Operation	10
Status light	10
Network connector	10
About the Software	11

How To

Overview	12
Selecting a Printing Method	13
Printing from Windows	13
Printing from OS X	13
Features of the Printing Methods	13
Installing Components on Your Computer	14
About Installing Components on Your Computer	14
Windows 8.x/7/Vista/Server 2012/Server 2008	14
Windows XP	15
Windows Server 2003	17
OS X	18
Setting Up the Network Interface	18
Connecting the Network Interface to the Network	18
Configuring the Network Interface (Windows)	19
Configuring the Network Interface (OS X)	20
Installing the Printer Driver	21
About Installing the Printer Driver	21
Windows 8.x/7/Vista/Server 2012/Server 2008	21
Windows XP	24
Windows Server 2003	27
OS X	30

Network Software

EpsonNet Config for Windows	31
About EpsonNet Config	31
System Requirements	31
Installing EpsonNet Config.	31
Accessing the EpsonNet Config User's Guide.	32
EpsonNet Config for Mac OS	32
About EpsonNet Config	32
System Requirements	32
Installing EpsonNet Config.	33
EpsonNet Config with Web Browser	33
About EpsonNet Config	33
Configuring the Network Interface Using EpsonNet Config with Web Browser.	33
Opening Screen.	36
Remote Manager	36
About Remote Manager.	36
Configuring the Network Interface Using Remote Manager	36
EpsonNet Print (for Windows users)	36
About EpsonNet Print	36
System Requirements	37
Installing EpsonNet Print	37
Configuring the Printer Port	43

Troubleshooting

General Problems	45
Cannot configure the network interface or cannot print from the network.	45
Cannot print even if you have assigned the IP address to the computer and the printer.	45
Unable to start EpsonNet Config with.	45
The message "EpsonNet Config cannot be used because no network is installed." appears when you start EpsonNet Config.	46
Unable to start EpsonNet Config with Web Browser or Remote Manager.	46
The Model Name and IP Address do not appear in the EpsonNet Config dialog box.	46
Printing a Network Status Sheet	46

Tips for Administrator

Setting an IP Address on the Printer's Control Panel	47
Secure Communication Using IPsec, Access Control, SSL, and IEEE 802.1X.	47
IPsec protocol	47
Access Control.	47
SSL	48

IEEE 802.1X	48
Secure Communications (IPsec/Access Control)	49
Overview and Sample Settings	49
Configuration Workflow	50
Product Security Policies	51
Supported Security Methods	54

Safety Instructions

Warning, Caution, Important, and Note

Warning

must be followed carefully to avoid serious bodily injury.

Caution

must be followed carefully to avoid bodily injury.

Important

must be observed to avoid damage to your equipment.

Note

contains important information and useful tips on the operation of your printer.

Introduction

About Your Printer

Your printer has a built-in Ethernet interface and can connect anywhere on your network using 10Base-T, 100Base-TX, and 1000Base-T Ethernet. The built-in Ethernet interface, which is called the network interface in this manual, automatically selects the correct standard when it connects to a network. In addition, it automatically selects appropriate network protocols.

Because the network interface supports multiple protocols and automatically detects protocols on your network, you can print from Microsoft® Windows® and OS X® applications.

Use the Software Disc or downloaded software package to easily configure the network interface for use on the TCP/IP network and install the printer driver. You can use the printer on the TCP/IP network at once.

If you want to configure the network interface for protocols such as TCP/IP, WSD, LLTD, UPnP, Bonjour, and SNMP, use EpsonNet Config, the configuration utility provided with your product, to quickly and easily configure the network interface to use those protocols.

Note:

The EpsonNet Config utility configures the network interface to work only with protocols that exist on your network. This does not imply that you can use all of the above-mentioned protocols on your network or operating system. The protocols that the network interface can use may vary depending on the operating system and the network configuration.

About This Guide

This Network Guide contains information about using the network interface on a network. It includes how to set up the network interface, install the configuration software, and modify network settings of your printer and computers.

For information about your printer, see your User's Guide.

Note:

- To read the guide, you must have Adobe Reader or Adobe Acrobat Reader installed on your computer.*
- This guide is written for network administrators, and many of the steps included here require detailed network knowledge and administrator rights.*

- ❑ The term “network administrator” refers to the person responsible for maintaining the network. “Administrator” is synonymous with “Supervisor” in this guide.
- ❑ The term “network interface” refers to the built-in Ethernet interface of the printer in this guide.
- ❑ Some screen shots in this guide may list a printer name other than your printer. This difference does not alter the instructions.
- ❑ The supported operating systems are different depending on the printer. See your printer’s User’s Guide for the supported operating systems.

Operating Environment

The network interface supports the following environments.

OS	Protocol	IPv4	IPv6
Windows 10	TCP/IP (Standard TCP/IP port)	supported	supported
Windows 8.x	TCP/IP (EpsonNet Print port)	supported	not supported
Windows 7			
Windows Vista			
Windows Server 2012			
Windows Server 2008			
Windows XP (Home, Professional)	TCP/IP (Standard TCP/IP port)	supported	not supported
Windows Server 2003	TCP/IP (EpsonNet Print port)	supported	not supported
OS X 10.6 or later	Bonjour	supported	supported

Features of the Network Interface

- ❑ Connects your Epson printer using a built-in Ethernet interface, which is called the network interface in this manual, to the network.
- ❑ Supports multiple protocols, such as TCP/IP, WSD, LLTD, UPnP, Bonjour, and SNMP.
- ❑ Supports 10Base-T, 100Base-TX, and 1000Base-T Ethernet.
- ❑ Supports Bonjour on OS X 10.6 or later.
- ❑ Supports access control to your printer by filtering client computer’s IP addresses.
- ❑ Supports SSL (Secure Sockets Layer) for HTTPS protocols.

- ❑ Supports IPSec.
- ❑ Supports IEEE 802.1X
- ❑ Supports EpsonNet Config with a Web Browser and Remote Manager, which allows you to configure and monitor your printer using a Web browser.

Network Interface Operation

Status light

The indicator lights provide you with important information on the operations of the network interface.

Large format inkjet printers (Models that do not support 1000 Mbps communication)

Status light	Data light	Network Status
Green	Yellow	Ready (10 M link)
Green	Yellow (Flashing)	Receiving packets (10 M link)
Red	Yellow	Ready (100 M link)
Red	Yellow (Flashing)	Receiving packets (100 M link)

Large format inkjet printers (Models that support 1000 Mbps communication)

Status light	Data light	Network Status
Red	Yellow	Ready (100 M link)
Red	Yellow (Flashing)	Receiving packets (100 M link)
Green	Yellow	Ready (1000 M link)
Green	Yellow (Flashing)	Receiving packets (1000 M link)

Network connector

RJ-45 connector: This connector is used to connect an Ethernet cable to a network. You can use this cable for 10Base-T, 100Base-TX, and 1000Base-T Ethernet.

Important:

You must use the following shielded twisted-pair cable to connect the network interface to a network.

- ❑ Category-5 or higher for the 10Base-T or 100Base-TX connection
- ❑ Category-6 or higher for the 1000Base-T connection

About the Software

The Software Disc provided with your printer includes the following network software.

Note:

The software provided varies depending on your printer model.

- ❑ EpsonNet Config is a configuration utility for administrators that allows you to configure the network interface for various protocols such as TCP/IP and SNMP. See “EpsonNet Config for Windows” on page 31 or “EpsonNet Config for Mac OS” on page 32.
- ❑ EpsonNet Config with Web Browser and Remote Manager are Web-based configuration utility programs that allow you to configure a network interface for TCP/IP and SNMP. See “EpsonNet Config with Web Browser” on page 33 and “Remote Manager” on page 36.
- ❑ EpsonNet Print is a Windows-based utility program that provides peer to peer printing to Epson printers on the TCP/IP network. See “EpsonNet Print (for Windows users)” on page 36

How To

Overview

This section describes the general procedure on how to set up the network interface for use on a network.

1. Check the network interface operation.

Check the functions and operations of the network interface, such as status lights and RJ-45 connector. See “Network Interface Operation” on page 10 for details.

2. Select a printing method.

Select a printing method appropriate for your network environment and operating system. If you are not sure, see “Printing from Windows” on page 13 or “Printing from OS X” on page 13 for details.

3. Install the necessary components on your computer.

Make sure the necessary components (such as TCP/IP) are installed on the computer, and network settings (such as IP address, subnet mask, etc.) of the computer is set. See “About Installing Components on Your Computer” on page 14 for details.

4. Connect the network interface to the network.

Connect the network interface to the network. See “Connecting the Network Interface to the Network” on page 18 for details.

5. Configure the network interface and install the printer driver.

See “Configuring the Network Interface (Windows)” on page 19, “Configuring the Network Interface (OS X)” on page 20, or “Installing the Printer Driver” on page 21 for details.

6. If necessary, configure the network settings of the network interface using EpsonNet Config.

Configure the network interface using EpsonNet Config. For Windows users, see “EpsonNet Config for Windows” on page 31. For OS X users, see “EpsonNet Config for Mac OS” on page 32.

Selecting a Printing Method

Printing from Windows

Check if there is a Windows 8.x/7/Vista/XP/Server 2012/Server 2008/ Server 2003 print server on your network, and then use the suggestions below.

Note:

Only the recommended printing methods are introduced here. See “Features of the Printing Methods” on page 13 for information on additional methods.

If no Windows print server exists

We recommend TCP/IP printing. See “Windows 8.x/7/Vista/Server 2012/Server 2008” on page 14, “Windows XP” on page 15, “Windows Server 2003” on page 17, or “Setting Up the Network Interface” on page 18.

If a Windows print server exists

On the server, set the printer to connect and turn it into a shared printer. Your clients can then print to this shared printer.

Printing from OS X

OS X 10.6 or later

- Bonjour

Features of the Printing Methods

This section describes features of the printing methods available for you to choose.

TCP/IP printing

Advantages

- Connects directly to the network; no USB cable required.
- No special utility for Windows is required.
- You can see the printer status using EPSON Status Monitor.

- ❑ You can print via a router.

Disadvantages

- ❑ You need to set up TCP/IP.

Installing Components on Your Computer

About Installing Components on Your Computer

Before configuring the network interface and printing from the computer, you need to install the necessary components (such as TCP/IP) and assign an IP address and subnet mask for your computer, depending on the printing method you want to use. See the section in this chapter appropriate for your operating system.

Note:

- ❑ *The Windows operating system disk may be required during the installation.*
- ❑ *When using TCP/IP for printing, you need to set the IP address, the subnet mask, and the default gateway of the computer.*

Windows 8.x/7/Vista/Server 2012/Server 2008

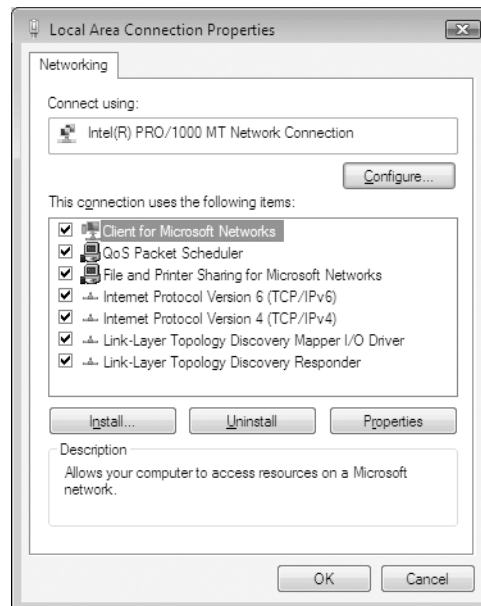
Use the following procedure to install the necessary components.

1. Open the **Control Panel**, and then click **View network status and tasks** or double-click **Network and Sharing Center**.
2. Do one of the following:
 - ❑ **Windows 8.x/Server 2012:** Click **Change Adapter Setting**, select your network adapter, and then click **Change settings of this connection**.
 - ❑ **Windows 7:** Click **Local Area Connection** and then click the **Properties** button.
 - ❑ **Windows Vista/Server 2008:** Click **View Status** and then click the **Properties** button.

Note:

*If the User Account Control screen appears, click the **Yes** or **Continue** button.*

3. Check if the following necessary components are in the list.



The following table lists the components required for configuring the network interface with EpsonNet Config.

EpsonNet Config's setting screens	Necessary components
TCP/IP, WSD, UPnP, Bonjour	Internet Protocol (TCP/IP IPv4) or Internet Protocol (TCP/IP IPv6)

The following table lists the components required for network printing.

Printing method	Necessary components
TCP/IP printing	Internet Protocol (TCP/IP IPv4) or Internet Protocol (TCP/IP IPv6)

4. Double-click **Internet Protocol Version 4 (TCP/IPv4)** or **Internet Protocol Version 6 (TCP/IPv6)** on the Local Area Connection Properties dialog box to open the properties dialog box. Set the IP address, the subnet mask, etc. and then click **OK**.
5. Restart the computer.

The necessary components are now installed. Go to the section "Setting Up the Network Interface" on page 18.

Windows XP

For Windows XP, use the following procedure to install the necessary components.

1. Click **Start**, highlight **Control Panel**, and then click **Network and Internet Connections**. Select **Network Connections**.
2. Under **LAN or High-Speed Internet**, click the **Local Area Connection** icon.
3. Under **Network Tasks**, click **Change settings of this connection**.
4. Check if the following necessary components are in the list.



The following table lists the components required for configuring the network interface with EpsonNet Config.

EpsonNet Config's setting screens	Necessary components
TCP/IP, WSD, UPnP, Bonjour	Internet Protocol (TCP/IP)

The following table lists the components required for network printing.

Printing method	Necessary components
TCP/IP printing	Internet Protocol (TCP/IP)

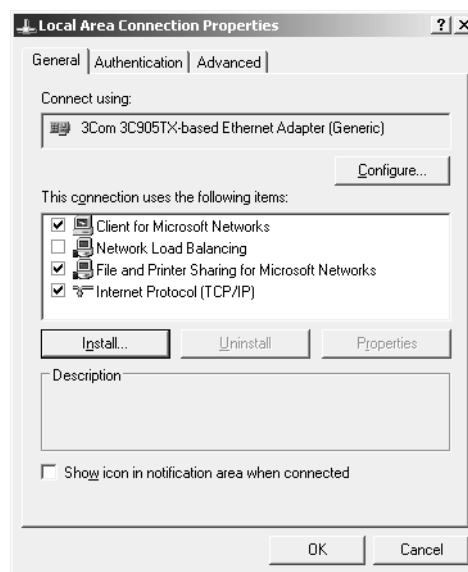
5. Double-click **Internet Protocol (TCP/IP)** on the Local Area Connection Properties dialog box to open the Internet Protocols (TCP/IP) Properties dialog box. Set the IP address, the subnet mask, etc. and then click **OK**.
6. Restart the computer.

The necessary components are now installed. Go to the section "Setting Up the Network Interface" on page 18.

Windows Server 2003

For Windows Server 2003, use the following procedure to install the necessary components.

1. Click **Start**, point to **Control Panel**, and then select **Network Connections**. Click **Local Area Connections**.
2. Click the **Properties** button.
3. Check if the following necessary components are in the list.



The following table lists the components required for configuring the network interface with EpsonNet Config.

EpsonNet Config's setting screens	Necessary components
TCP/IP, WSD, UPnP, Bonjour	Internet Protocol (TCP/IP)

The following table lists the components required for network printing.

Printing method	Necessary components
TCP/IP printing	Internet Protocol (TCP/IP)

4. Double-click **Internet Protocol (TCP/IP)** on the Local Area Connection Properties dialog box to open the Internet Protocols (TCP/IP) Properties dialog box. Set the IP address, the subnet mask, etc. and then click **OK**.
5. Restart the computer.

The necessary components are now installed. Go to the section “Setting Up the Network Interface” on page 18.

OS X

For OS X, use the following procedure to assign an IP address, subnet mask, and other settings.

1. From the Apple menu, select **System Preferences**.
2. Open the **Network** control panel.
3. Select **Ethernet** as the connection method.
4. Select how you want to assign an IP address from the Configure pull-down menu.
5. Assign an IP address and other settings if necessary.
6. Click the **Apply Now** button to save any changes.
7. Go to the section “Setting Up the Network Interface” on page 18.

Setting Up the Network Interface

Connecting the Network Interface to the Network

Follow the instructions below to connect the network interface to the network.

1. Make sure that your printer is turned off.
2. Connect one end of the network cable to the RJ-45 connector on the network interface, and the other end to the network.

Important:

You must use the following shielded twisted-pair cable to connect the network interface to a network.

- Category-5 or higher for the 10Base-T or 100Base-TX connection*
- Category-6 or higher for the 1000Base-T connection*

Do not connect the network interface and the computer directly. Be sure to use a HUB to connect the network interface to the network.

Note:

You can use 10Base-T, 100Base-TX, and 1000Base-T Ethernet. When you print a lot of data, we recommend you use the higher speed.

3. Turn on your printer. After the status lights go off, print a network status sheet.

Important:

After turning off the printer, wait until the status lights go off before turning it back on; otherwise the network interface may not work correctly.

Note:

Because Bonjour is on by default, you can use the printer on a network just by connecting it to the network. If you want to disable the Bonjour setting, use the printer's control panel. See your printer User's Guide for details.

Now, you can configure the network interface to use on the TCP/IP network and also install the printer driver using the Software Disc shipped with your printer.

If you are using Windows, see "Configuring the Network Interface (Windows)" on page 19.

If you are using OS X, see "Configuring the Network Interface (OS X)" on page 20.

Configuring the Network Interface (Windows)

Configure the network interface for use on the TCP/IP network by installing EpsonNet Print and the printer driver on your computer. See "EpsonNet Print (for Windows users)" on page 36 and "Installing the Printer Driver" on page 21.

1. Make sure your printer is connected to the network (a hub or router).
2. Insert the Software Disc into the CD/DVD drive or run the software package that you downloaded.

Note:

If you see the AutoPlay window, click *Run setup.exe*. If you see the User Account Control screen, click *Yes* or *Continue*.

3. The software installer screen opens automatically.

If you're running the Software Disc and the software installer screen does not appear, double-click **setup.exe** on the Software Disc.

4. Select your language, and then click the **Next** button.
5. Click the **Next** button at the Welcome screen
6. Click the **Agree** button to accept the license terms.

7. The Software Select screen appears. To print via a network, make sure to select the **Epson Driver and Utilities** check box and **EpsonNet Configuration Utility** check box, then click the **Install** button.

Note:

*If your printer is connected to your computer with a USB cable, clear the **EpsonNet Configuration Utility** check box.*

8. Software installation starts. Follow the on-screen instructions to complete the installation.

Configuring the Network Interface (OS X)

Configure the network interface for use on the TCP/IP network and install the printer driver on your computer.

1. Make sure your printer is connected to the network (a hub or router).
2. Insert the Software Disc into the CD/DVD drive or run the software package that you downloaded.
3. The EPSON folder opens automatically.
4. Double-click the EPSON icon.

The installer screen opens.

5. Enter your username and password in the authentication screen.
6. Select the **I agree to the contents of the License Agreement** check box and then click the **Next** button.
7. The Software Select screen appears. To print via a network, make sure to select the **Epson Driver and Utilities** check box and **EpsonNet Network Utilities** check box, then click the **Install** button.

Note:

*If your printer is connected to your computer with a USB cable, clear the **EpsonNet Network Utilities** check box.*

8. Software installation starts. Follow the on-screen instructions to complete the installation.

Adding the Printer (OS X)

1. Open **System Preferences**.

2. Open **Print & Fax**.
3. Click the + button to add a new printer.
4. Select the desired printer model that is connected with Bonjour.

Note:

*If your printer is not displayed with the desired connection, click **More Printers**, select the desired connection from the drop-down list, and then select the printer model.*

5. Click **Add**.

Now you can use the printer on the TCP/IP network.

Note:

If your printer supports scanning, see the product's User's Guide to configure the settings.

Installing the Printer Driver

About Installing the Printer Driver

To print to the network printer, you need to install the printer driver on the computer. The following section explains how to install the printer driver manually. See the section in this chapter appropriate for your operating system.

Windows 8.x/7/Vista/Server 2012/Server 2008

The printer driver installation procedure differs depending on the printing method you prefer.

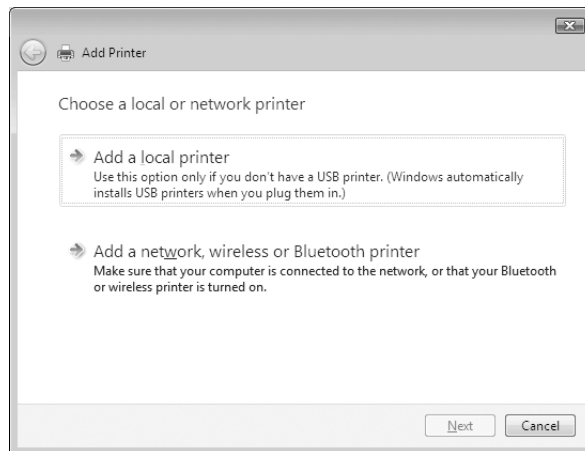
TCP/IP printing

Note:

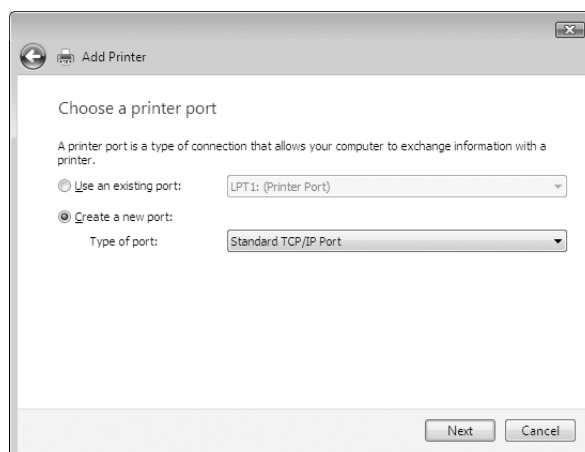
If you are using EpsonNet Print, the setup procedure is different. See "EpsonNet Print (for Windows users)" on page 36 for details. EpsonNet Print does not support IPv6.

1. Open the **Control Panel**, and then click **View devices and printers** (Windows 8.x/7/Server 2012) or **Printers** (Windows Vista/Server 2008).
2. Click **Add a printer** to start the Add Printer wizard.

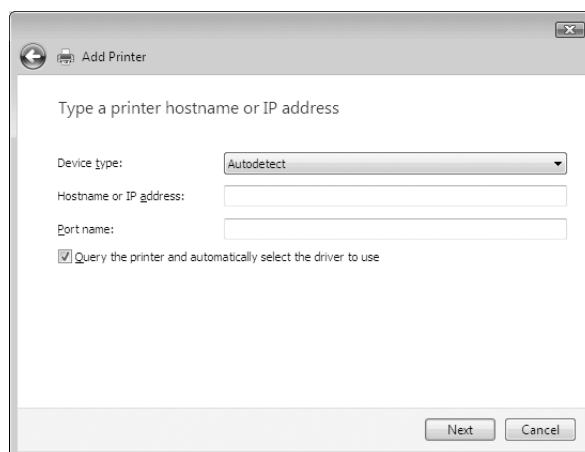
3. Click **Add a local printer**.



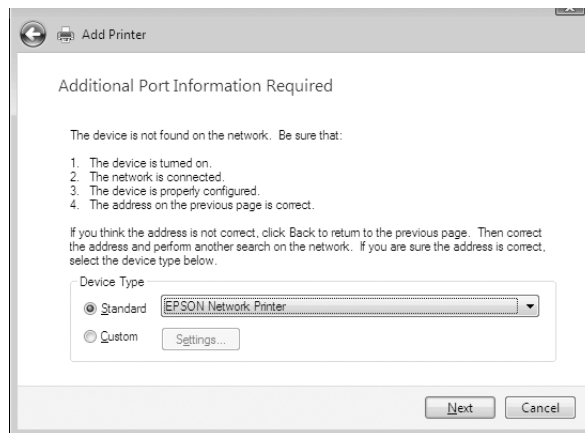
4. Select the **Create a new port** radio button, and then select **Standard TCP/IP Port** from the list. Then click **Next**.



5. Enter the IP address of the network interface and then click **Next**.



6. If an error occurs, the following dialog box appears. Select the **Standard** radio button and then select **EPSON Network Printer**. Click **Next**.



7. Click **Finish**.
8. See "Installing the Printer Driver" on page 21 to install the printer driver.

Installing the printer driver

1. Insert the Software Disc shipped with the printer or run the software package that you downloaded.
2. Close the software installer screen.
3. On the Add Printer screen, click the **Have Disk** button. The Install From Disk dialog box appears.
4. Click **Browse**.
5. Do one of the following:
 - ❑ CD/DVD: Select the CD/DVD drive for the drive, and navigate to \Common\Printer. Double-click the **WINX64** folder or the **WINX86** folder depending on your operating system. Click **Open**. Click **OK** in the Install From Disk dialog box.
 - ❑ Software package: Navigate to the location of the downloaded software package, select it and click **OK** in the Install From Disk dialog box.
6. Select the model name of the printer, and then click **Next**.

Note:

*If the Add Printer wizard prompts you to select either **Keep existing driver** or **Replace existing driver**, be sure to select the **Replace existing driver** radio button, and then click **Next**.*

7. Choose whether to print a test page, and then click the **Next** button.
8. Click **Finish** and follow the on-screen instructions to complete the setup.

Windows XP

The printer driver installation procedure differs depending on the printing method you prefer.

Note:

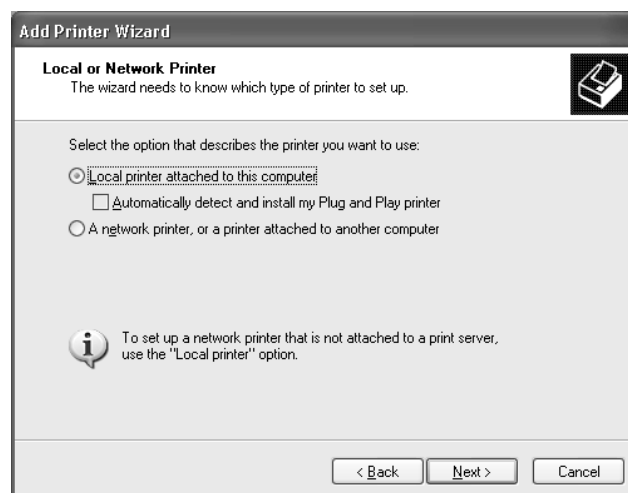
If you are using EpsonNet Print, the setup procedure is different. See “EpsonNet Print (for Windows users)” on page 36 for details.

TCP/IP printing

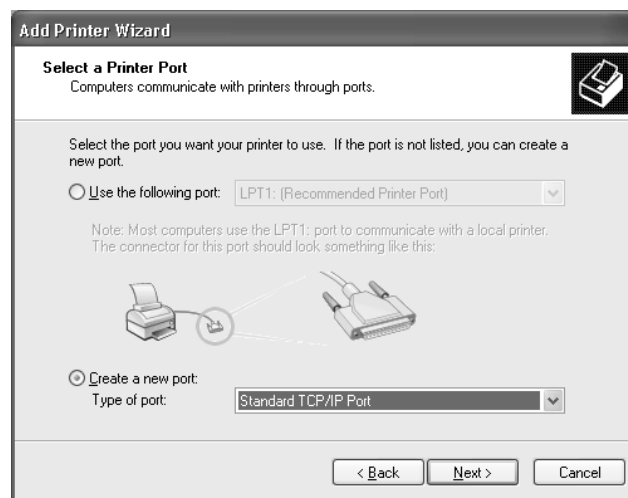
1. Click **Start**, click **Control Panel**, click **Printers and Other Hardware**, and then click **Printers and Faxes**.
2. Under **Printer Tasks**, click **Add a printer** to start the Add Printer wizard, and then click **Next**.
3. Click **Local printer attached to this computer**, clear the **Automatically detect and install my Plug and Play printer** check box, and then click **Next**.

Note:

*You must clear the **Automatically detect and install my Plug and Play printer** check box because the printer is attached directly to the network, not to a Windows XP computer.*



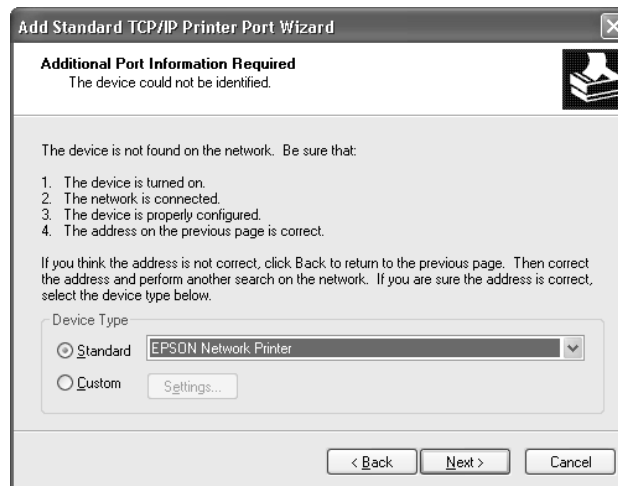
4. Select the **Create a new port** radio button, and then select **Standard TCP/IP Port** from the list. Then click **Next**.



5. Enter the IP address of the network interface and then click **Next**.



6. If an error occurs, the following dialog box appears. Select the **Standard** radio button and then select **EPSON Network Printer**. Click **Next**.



7. Click **Finish**.
8. See “Installing the printer driver” on page 26 to install the printer driver.

Installing the printer driver

1. Insert the Software Disc shipped with the printer or run the software package that you downloaded.
2. Close the software installer screen.
3. On the Add Printer screen, click the **Have Disk** button. The Install From Disk dialog box appears.
4. Click **Browse**.
5. Do one of the following:
 - ❑ **CD/DVD:** Select the CD/DVD drive for the drive, and navigate to \Common\Printer. Double-click the **WINX64** folder or the **WINX86** folder depending on your operating system. Click **Open**. Click **OK** in the Install From Disk dialog box.
 - ❑ **Software package:** Navigate to the location of the downloaded software package, select it and click **OK** in the Install From Disk dialog box.
6. Select the model name of the printer, and then click **Next**.

Note:

*If the Add Printer wizard prompts you to select either **Keep existing driver** or **Replace existing driver**, be sure to select the **Replace existing driver** radio button, and then click **Next**.*

7. Choose whether to print a test page, and then click the **Next** button.
8. Click **Finish** and follow the on-screen instructions to complete the setup.

Windows Server 2003

The printer driver installation procedure differs depending on the printing method you prefer.

Note:

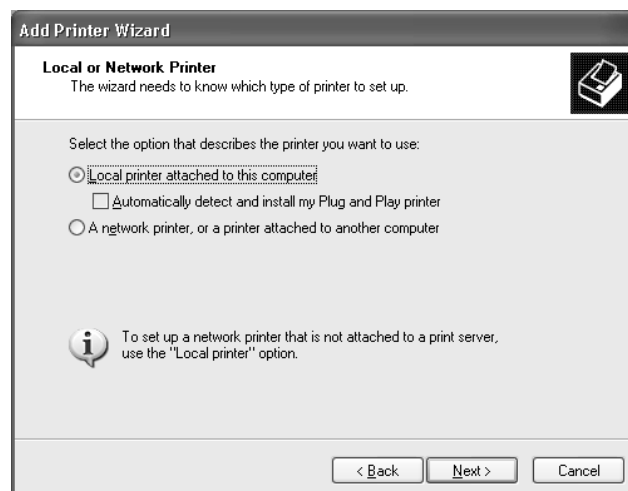
If you are using EpsonNet Print, the setup procedure is different. See "EpsonNet Print (for Windows users)" on page 36 for details.

TCP/IP printing

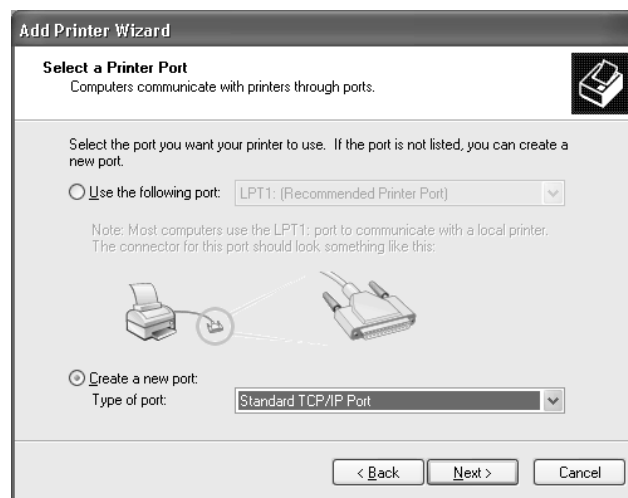
1. Click **Start**, and then select **Printers and Faxes**.
2. Double-click the **Add Printer** icon to start the Add Printer wizard, and then click **Next**.
3. Click **Local printer attached to this computer**, clear the **Automatically detect and install my Plug and Play printer** check box, and then click **Next**.

Note:

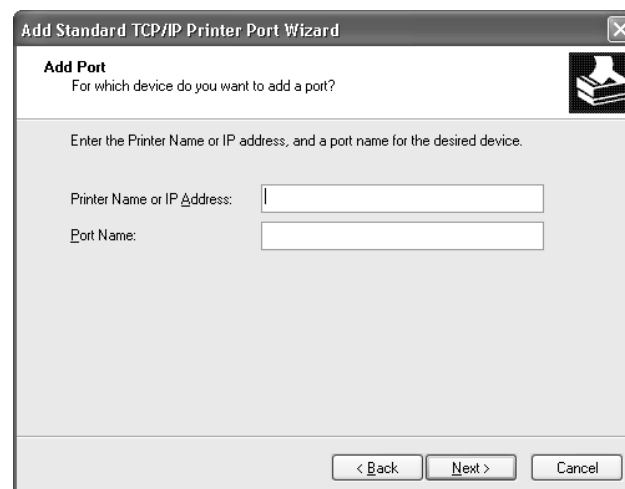
*You must clear the **Automatically detect and install my Plug and Play printer** check box because the printer is attached directly to the network, not to a computer.*



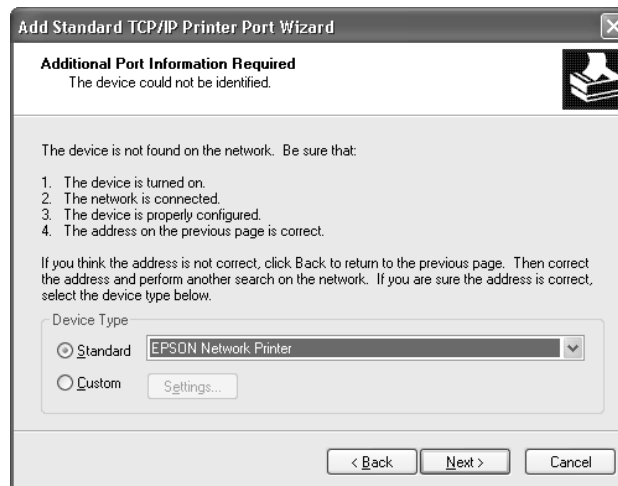
4. Select the **Create a new port** radio button, and then select **Standard TCP/IP Port** from the list. Then click **Next**.



5. When the Add Standard TCP/IP Printer Port Wizard dialog box appears, click **Next**.
6. Enter the IP address of the network interface and then click **Next**.



7. If an error occurs, the following dialog box appears. Select the **Standard** radio button and then select **EPSON Network Printer**. Click **Next**.



8. Click **Finish**.
9. See “Installing the printer driver” on page 26 to install the printer driver.

Installing the printer driver

1. Insert the Software Disc shipped with the printer or run the software package that you downloaded.
2. Close the software installer screen.
3. On the Add Printer screen, click the **Have Disk** button. The Install From Disk dialog box appears.
4. Click **Browse**.
5. Do one of the following:
 - ❑ **CD/DVD:** Select the CD/DVD drive for the drive, and and navigate to \Common\Printer. Double-click the **WINX64** folder or the **WINX86** folder depending on your operating system. Click **Open**. Click **OK** in the Install From Disk dialog box.
 - ❑ **Software package:** Navigate to the location of the downloaded software package, select it and click **OK** in the Install From Disk dialog box.
6. Select the model name of the printer, and then click **Next**.

Note:

*If the Add Printer wizard prompts you to select either **Keep existing driver** or **Replace existing driver**, be sure to select the **Replace existing driver** radio button, and then click **Next**.*

7. Choose whether to print a test page, and then click the **Next** button.
8. Click **Finish** and follow the on-screen instructions to complete the setup.

OS X

Follow the steps below to set up a printer.

Note:

Make sure that the printer driver is installed on your OS X system before following the steps below. See the manual shipped with your printer for instructions on how to install the printer driver.

Bonjour printing

1. Open **System Preferences**.
2. Open **Print & Fax**.
3. Click the + button to add a new printer.
4. Select the desired printer model that is connected with Bonjour.
5. Click **Add**.

TCP/IP printing

1. Open **System Preferences**.
2. Open **Print & Fax**.
3. Click the + button to add a new printer.
4. Click **IP**.
5. Select the desired printing protocol from the pull-down list.
6. Enter the host name or IP address of the printer.
7. Select the desired printer model.
8. Click **Add**.

Network Software

This chapter explains how to use the network software provided with your printer.

Note:

The software provided varies depending on your printer model.

EpsonNet Config for Windows

About EpsonNet Config

EpsonNet Config is a configuration software for administrators to configure the network interface for TCP/IP.

System Requirements

The following table lists the system requirements of EpsonNet Config.

Operating systems	Windows 8 Windows 7 Windows Vista Windows XP Professional/Home Edition Windows Server 2012 Windows Server 2008/Windows Server 2008 R2 Windows Server 2003/Windows Server 2003 R2
Hard disk drive space	30 MB

Installing EpsonNet Config

You can install EpsonNet Config on your computer from the Software Disc that comes with your printer or the software package that you downloaded. Insert the Software Disc in the CD/DVD drive or run the installer, then select **EpsonNet Config** on the Software Select screen.

Note:

- ❑ Log on to the operating system with an administrator account to install EpsonNet Config.

- ❑ *If you add or delete protocols or services from your operating system after installing EpsonNet Config, EpsonNet Config may not work correctly. If this happens, uninstall EpsonNet Config and then install it again.*
- ❑ *If the Windows Security Alert window appears after you start EpsonNet Config, click the **Allow access** or **Unblock** button; otherwise the devices are not listed on the screen of EpsonNet Config.*

Accessing the EpsonNet Config User's Guide

The EpsonNet Config User's Guide contains detailed information on EpsonNet Config. Follow the steps below to access the EpsonNet Config User's Guide.

1. Click **Start**, point to **All Programs**, select **EpsonNet**, and then select **EpsonNet Config V3**.
2. Click **EpsonNet Config User's Guide**.

The EpsonNet Config User's Guide appears. By clicking the links on the front page or contents page, you can get information on using EpsonNet Config.

EpsonNet Config for Mac OS

About EpsonNet Config

EpsonNet Config is configuration software for administrators to configure the network interface for TCP/IP.

System Requirements

The following table lists the system requirements of EpsonNet Config.

Operating systems	OS X 10.5 or later
Hard disk drive space	30 MB

Installing EpsonNet Config

You can install EpsonNet Config on your computer from the Software Disc that comes with your printer or the software package that you downloaded. Insert the Software Disc in the CD/DVD drive or run the installer, then select **EpsonNet Config** on the Software Select screen.

EpsonNet Config with Web Browser

About EpsonNet Config

EpsonNet Config with Web Browser is a Web-based utility designed to configure the printer for use on a network.

By typing the IP address of the network interface for the URL in your browser, you can start EpsonNet Config to allow you to configure the network interface for TCP/IP and SNMP.

Supported Web browser

- Microsoft Internet Explorer version 6.0 SP3 or later
- Apple Safari 3 or later
- Mozilla Firefox version 3.6 or later

Configuring the Network Interface Using EpsonNet Config with Web Browser

After you have assigned an IP address to the network interface using EpsonNet Setup, EpsonNet Config for Windows or Mac OS, or the arp/ping command, you can configure the network interface using EpsonNet Config with Web Browser.

Note:

- A Web browser must be installed on your computer.*
- TCP/IP must be correctly set for the computer and the network interface.*
- Do not run both EpsonNet Config for Windows or Mac OS and EpsonNet Config with Web Browser at the same time.*
- Your browser may restrict some characters you can use. For details, see your browser or operating system documentation.*

The following procedure shows an example of configuring the network interface on a TCP/IP IPv4 network.

1. Turn on your printer.
2. Do one of the following:
 - Run EpsonNet Config for Windows or Mac OS. Select the printer you want to configure from the list and then click **Launch Browser**.
 - Open your browser, and then type in the IP address of the network interface directly. Do not run EpsonNet Config for Windows or Mac OS.
https://IP address of network interface/
Example: **https://192.168.100.201/**

Note:

- To check the IP address of the network interface, use EpsonNet Config. See “EpsonNet Config for Windows” on page 31 for Windows users or “EpsonNet Config for Mac OS” on page 32 for OS X users for details.
 - If Windows security alert screen appears, click **Continue** to start EpsonNet Config with Web Browser.
3. Click **TCP/IP** under Network on the Configuration menu, then click **IPv4 Address** to display the TCP/IP IPv4 settings screen.

Note:

If you want to configure a protocol other than TCP/IP, configure the desired settings on the Configuration - Network screen.

4. Select a method for acquiring the IP address. When you select **Auto**, DHCP becomes available and assigns an IP address automatically. If you want to set the IP address manually, select **Manual**.

Note:

- The network administrator must check any changes made to the IP address settings.
- When **Auto** is selected, DHCP becomes available. To use the DHCP server, make sure it is installed on your computer and correctly configured. See your operating system’s online help for detailed instructions.
- If **Set Using Automatic Private IP Addressing (APIPA)** is enabled, a private IP address is automatically assigned to the network interface even when there are no DHCP servers on your system or your network.
- If the DNS function is not supported, we recommend that you select **Manual** and then enter an IP address. This is because if you select **Auto**, the IP address of the network interface changes every time you turn on the printer so that you need to change the printer port setting accordingly.

5. To assign an IP address manually, enter the IP address, the subnet mask, and the default gateway. Be sure the IP address does not conflict with any other devices on the network.

Note:

If there is a server or a router functioning as a gateway, enter the IP address of the server or the router for the gateway address. If there is no gateway, leave the default values there.

6. If you want to get a private address between 169.254.1.1 and 169.254.254.254 automatically when an IP address cannot be obtained by the DHCP server, leave it set to **Enable** for **Set Using Automatic Private IP Addressing (APIPA)**; otherwise, select **Disable**.
7. When setting an IP address using the ping command, select **Enable** for **Set Using PING**. Select **Disable** when setting an IP address with EpsonNet Config; this prevents any unexpected change of the IP address.
8. Select **Enable** for **Acquire DNS Server Address Automatically** if you want to acquire the DNS server address using the DHCP server.

If you want to enter the DNS server address manually, select **Disable** and then enter the IP address of the DNS server.

9. Select **Enable** for **Acquire Host Name and Domain Name Automatically** if you want to acquire the host name and the domain name using the DHCP server.

If you want to specify manually, enter the host name and the domain name in the text boxes.

10. Select **Enable** for **Register Network Interface Address to DNS Server** if you want to register the host name and domain name to the DNS server through the DHCP server that supports Dynamic DNS.

If you want to register the host name and the domain name directly to the DNS server, select **Enable** for **Register Network Interface Address Directly to DNS Server**.

11. For OS X users:

Select **Enable** or **Disable** for **Use Bonjour**. If you select **Enable**, enter the Bonjour Name and Bonjour Printer Name.

12. Do not exit the Web browser and do not send a job to the printer until after you follow the on-screen instructions to reset the printer.

Note:

Since the new IP address becomes available after the printer is reset, you need to restart EpsonNet Config by entering the new IP address.

*Only changes on the page where you press the **Transmit** button take effect.*

Opening Screen

Any user can access the opening screen by typing the IP address of the network interface into the address bar of your browser.

Note:

- ❑ *The item appears only if your printer supports the function, and the name of the item may vary depending on the model.*
- ❑ *See the *EpsonNet Config with Web Browser help* for details about each item.*

Remote Manager

About Remote Manager

Remote Manager is a Web-based utility designed to configure the printer for use on a network.

By typing the IP address of the network interface into the address bar in your browser, you can start Remote Manager which allows you to configure the network interface for TCP/IP and SNMP.

Configuring the Network Interface Using Remote Manager

After you have assigned an IP address to the network interface using EpsonNet Setup, EpsonNet Config for Windows or OS X, or the arp/ping command, you can configure the network interface using Remote Manager.

Starting and operating methods for Remote Manager are the same as EpsonNet Config with Web Browser. See “Configuring the Network Interface Using EpsonNet Config with Web Browser” on page 33 for details.

EpsonNet Print (for Windows users)

About EpsonNet Print

EpsonNet Print is a Windows-based utility program that provides peer-to-peer printing to Epson printers on the TCP/IP network

By using EpsonNet Print, you can find a printer located in the same network segment or beyond a router. You can select LPR standard printing, LPR enhanced printing, or High-speed printing.

Note:

EpsonNet Print does not support an IPv6 environment.

System Requirements

The following table lists the system requirements of EpsonNet Print.

Operating systems	Windows 8.x Windows 7 Windows Vista SP2 or higher Windows XP Professional/Home Edition (SP3 or higher) Windows Server 2012 Windows Server 2008 (SP2 or higher) Windows Server 2008 R2 Windows Server 2003 (SP2 or higher)
-------------------	--

Installing EpsonNet Print

You can install EpsonNet Print on your computer from the Software Disc that comes with your printer or the software package that you downloaded. Insert the Software Disc in the CD/DVD drive or run the installer, and select **EpsonNet Print** on the Software Select screen.

Follow the steps below to add a port using the Add Printer Wizard.

- If you want to add a port for a printer with its IP address assigned automatically by the DHCP server or router, see “Adding a port for a printer assigned with a dynamic IP address” on page 38.
- If you want to add a port for a printer with its IP address assigned manually, see “Adding a port for a printer assigned with a static IP address” on page 40.

Note:

- Be sure that the computer is connected to the network and TCP/IP is correctly set.*
- A valid IP address must be assigned to the printer.*

Adding a port for a printer assigned with a dynamic IP address

1. **Windows 8.x/7/Vista/Server 2012/Server 2008:** Open the Control Panel, and then select **View devices and printers** (Windows 8.x/7/Server 2012) or **Printers** (Windows Vista/Server 2008). Click **Add a printer** to start the Add Printer Wizard.

Windows XP: Click **Start** and then **Printers and Faxes**. Under Printer Tasks, click **Add a printer** to start the Add Printer Wizard. Click **Next**.

Windows Server 2003: Click **Start** and then **Printers and Faxes**. Double-click **Add Printer** to start the Add Printer Wizard. Click **Next**.

2. **Windows 8.x/7/Vista/Server 2012/Server 2008:** Click **Add a local printer**. Select the **Create a new port** radio button, and then select **EpsonNet Print Port** from the list. Click **Next**.

Note:

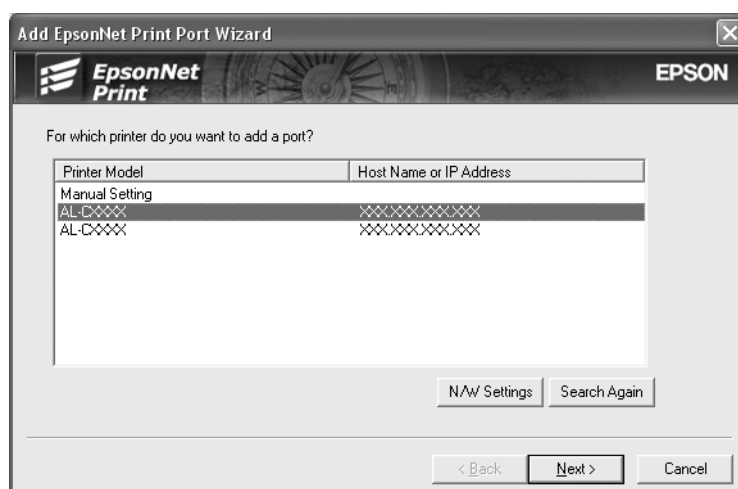
If the Windows Security Alert screen appears, click the **Allow** access or **Unblock** button, and then click the **Search Again** button to search the printers.

Windows XP/Server 2003: Click **Local printer attached to this computer**, clear the **Automatically detect and install my Plug and Play printer** check box, and then click **Next**. Select the **Create a new port** radio button, and then select **EpsonNet Print Port** from the list. Click **Next**.

Note:

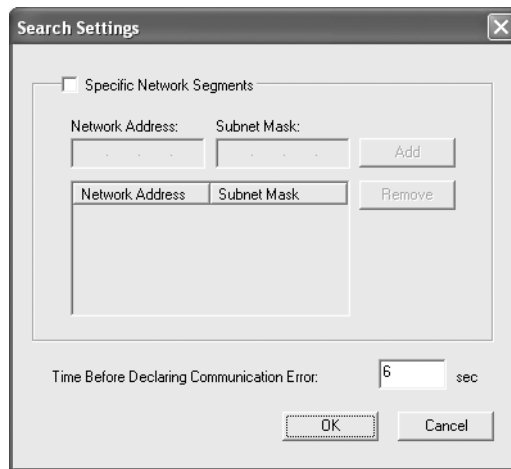
If the Windows Security Alert screen appears, click the **Unblock** button, and then click the **Search Again** button to search the printers.

3. Select the target printer, and then click Next.

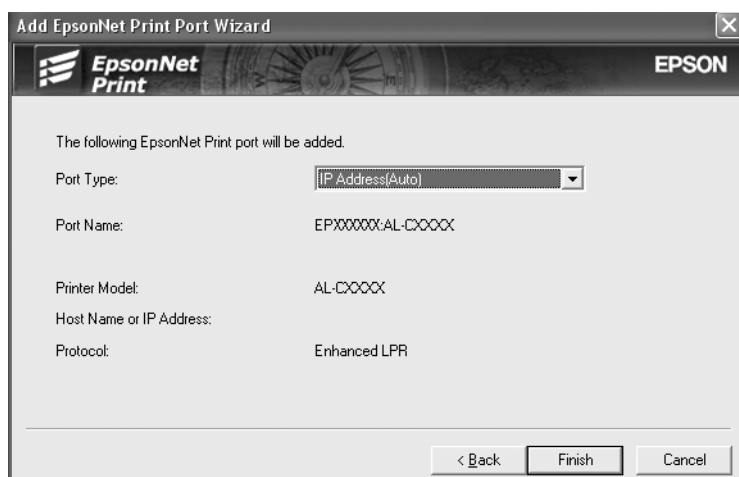


Note:

- ❑ If the target printer is not in the list, click the **Search Again** button to search the printers using new parameters.
- ❑ Each column can be sorted in ascending or descending order by clicking the column header. However, **Manual Setting** is always displayed on the top of the list regardless of sorting.
- ❑ If you want to search printers in other segments, click the **N/W Settings** button. Select the **Specific Network Segments** check box, and then enter the network address and subnet mask of the network segment for the search. Then click the **Add** button. You can also specify the elapsed time before declaring a communication error.



4. Confirm the information about the printer's port you want to configure, and then click **Finish**.



Items	Explanations
Port Type	<p>The following items are listed in the pull-down menu, and you can select the port type you need.</p> <p>IP Address (Auto): Configure the port automatically. If the IP address of the printer is acquired automatically and the computer and the printer are in the same segment, you can select this port type.</p> <p>IP Address (Manual): Use the printer's IP Address for the port name.</p> <p>HostName (DNS): Use the printer's host name registered in the DNS server for the port name.</p>
The port Information	<p>The following items are displayed:</p> <ul style="list-style-type: none"> - Port Name (If the port type is changed, the port name and the host name or IP address are also changed.) - Printer Model - Host Name or IP Address - Protocol
Finish button	Register the port information to the system and close the Add EpsonNet Print Port Wizard.
Back button	Go back to the printer list window.
Cancel button	Close the Add EpsonNet Print Port Wizard.

The new printer port is created in your computer. To install the printer driver, see "Installing the Printer Driver" on page 42.

Adding a port for a printer assigned with a static IP address

1. **Windows 8x/7/Vista/Server 2012/Server 2008:** Open the **Control Panel**, and then **View devices and printers** (Windows 8.1/8/7/Server 2012), or **Printers** (Windows Vista/Server 2008). Click **Add a printer** to start the Add Printer Wizard.

Windows XP: Click **Start** and then **Printers and Faxes**. Under Printer Tasks, click **Add a printer** to start the Add Printer Wizard. Click **Next**.

Windows Server 2003: Click **Start** and then **Printers and Faxes**. Double-click **Add Printer** in the Printers folder to start the Add Printer Wizard. Click **Next**.

2. **Windows 8.x/7/Vista/Server 2012/Server 2008:** Click **Add a local printer**. Select the **Create a new port** radio button, and then select **EpsonNet Print Port** from the list. Click **Next**.

Note:

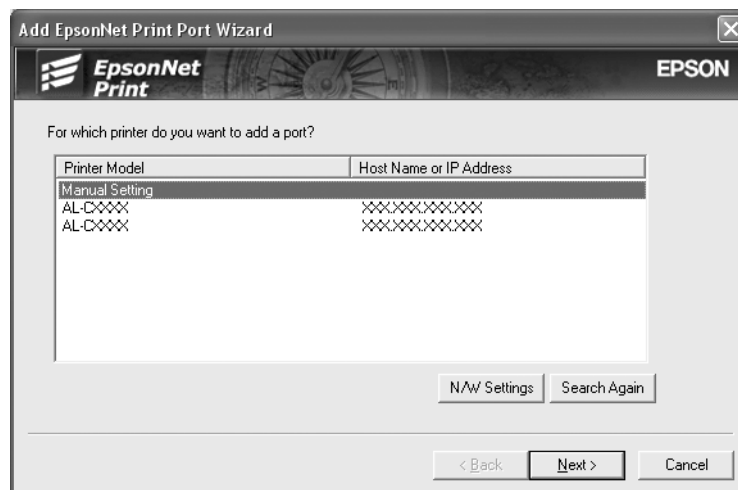
*If the Windows Security Alert screen appears, click the **Allow access** or **Unblock** button, and then click the **Search Again** button to search the printers.*

Windows XP/Server 2003: Click **Local printer attached to this computer**, clear the **Automatically detect and install my Plug and Play printer** check box, and then click **Next**. Select the **Create a new port** radio button, and then select **EpsonNet Print Port** from the list. Click **Next**.

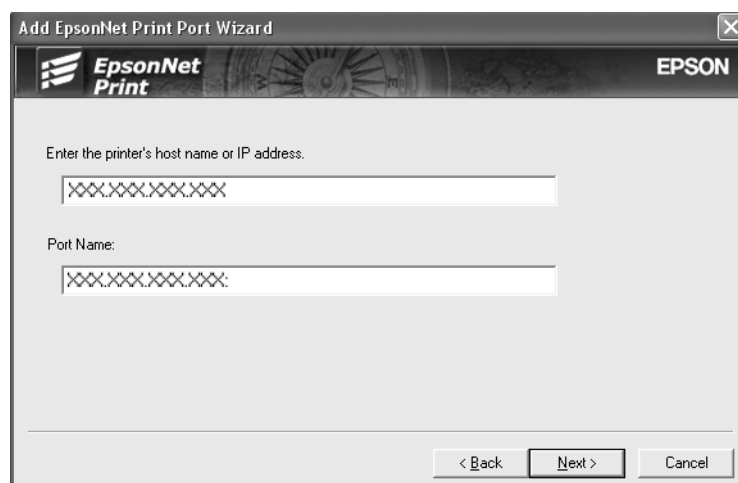
Note:

If the Windows Security Alert screen appears, click the **Unblock** button, and then click the **Search Again** button to search the printers.

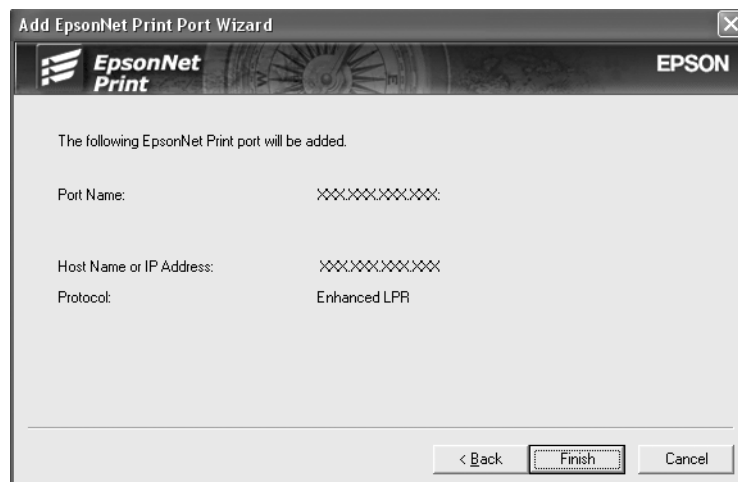
3. Select **Manual Setting** from the list, and then click **Next**.



4. Enter the printer's name and the port name is automatically entered to the Port Name edit box. Then click **Next**.



5. Confirm the information about the printer's port you want to configure, and then click **Finish**.



Items	Explanations
The port Information	The following items are displayed: - Port Name - Host Name or IP Address - Protocol
Finish button	Register the port information to the system and close the Add EpsonNet Print Port Wizard.
Back button	Go back to the printer list window.
Cancel button	Close the Add EpsonNet Print Port Wizard.

The new printer port is created in your computer. To install the printer driver, see “Installing the Printer Driver” on page 42.

Installing the Printer Driver

Install the printer driver on your computer using the Software Disc that came with your printer or the software package that you downloaded. See “Installing the Printer Driver” on page 21.

Note:

Some buttons in these steps may be slightly different depending on your operating system.

1. Insert the Software Disc shipped with the printer.
2. Close the installer screen if it appears.
3. On the Add Printer screen, click the **Have Disk** button. The Install From Disk dialog box appears.

4. Click **Browse**.
5. Select the CD/DVD drive for Drives, and double-click the appropriate folder for your operating system. Click **OK**.
6. Click **OK** in the Install From Disk dialog box.
7. Select the model name of the printer, and then click **Next**.

Note:

*If the Add Printer Wizard asks you to select either **Keep existing driver** or **Replace existing driver**, be sure to select the **Replace existing driver** radio button. Click **Next**.*

8. Click **Finish** and follow the on-screen instructions to complete the setup.
9. The printer is now ready for peer-to-peer printing. To configure the printer port, see “Configuring the Printer Port” on page 43.

Configuring the Printer Port

Follow the steps below to configure the printer port. The printing speed differs depending on your selection.

1. **Windows 8.x/7/Vista/Server 2012/Server 2008:**

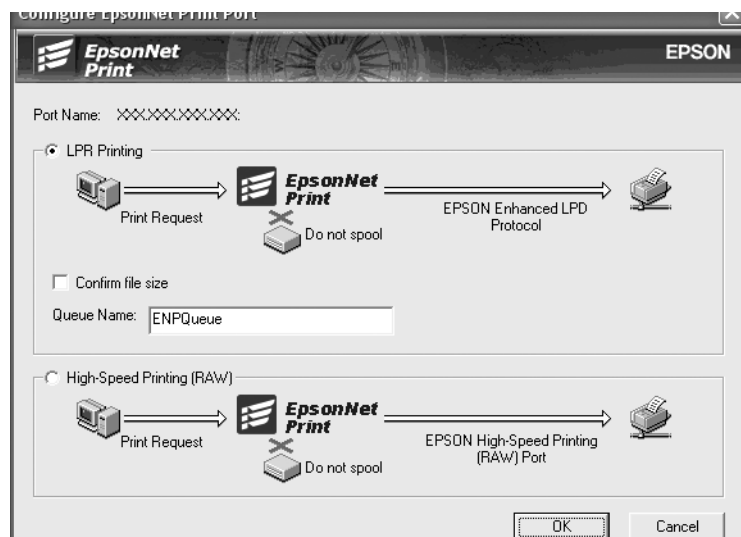
Open the **Control Panel**, and then **View devices and printers** (Windows 8.1/8/7/Server 2012) or **Printers** (Windows Vista/Server 2008).

Windows XP/Server 2003:

Click **Start** and then **Printers and Faxes**.

2. Right-click the target printer, and then click **Properties**.
3. Click the **Ports** tab, and then click the **Configure Port** button.

4. Make the appropriate settings for the desired port.



LPR enhanced printing:

Select the **LPR Printing** radio button, and then specify the queue name (up to 32 characters). LPR enhanced printing sends a print job to the target network printer without spooling all of the print data. LPR enhanced printing is faster than LPR standard printing.

LPR standard printing:

Select the **Confirm file size** check box, and then specify the queue name (up to 32 characters). Print data is spooled by the computer before being sent to the target network printer.

Note:

When the print data size is 20 MB or more, we recommend that you use LPR enhanced printing.

High-speed printing:

Select the **High-Speed Printing (RAW)** radio button. The Epson high-speed printing port sends a print job to the target network printer without spooling all of the print data. High-Speed printing is faster than the other two printing methods.

5. Click **OK**.

If you select the **High-Speed Printing (RAW)** radio button and if the printer does not support High-Speed printing, or if you fail to connect to the printer, an error message appears. Follow the message to remedy the problem.

Troubleshooting

General Problems

Cannot configure the network interface or cannot print from the network.

Cause	What to do
The printer settings or network settings may be wrong.	First, check to see if you can print a status sheet, as described in "Printing a Network Status Sheet" on page 46. If you can print a status sheet, check the network settings; otherwise, set the interface mode of the printer's control panel to Auto or Option .

Cannot print even if you have assigned the IP address to the computer and the printer.

Cause	What to do
You have assigned an IP address to the computer manually, but you assigned the IP address to the printer by Automatic Private IP Addressing (APIPA).	Assign the printer's IP address so that it belongs to the same segment as the computer. Use EpsonNet Config and the printer's control panel.

Unable to start EpsonNet Config with.

Cause	What to do
You have added or deleted protocols after installing EpsonNet Config.	Uninstall EpsonNet Config and then reinstall it. See "Installing EpsonNet Config" on page 33.

The message “EpsonNet Config cannot be used because no network is installed.” appears when you start EpsonNet Config.

Cause	What to do
TCP/IP is not installed on the computer.	Install the TCP/IP protocol.
TCP/IP is installed on the computer, but its IP address is not set correctly.	Set a correct IP address for the computer.

Unable to start EpsonNet Config with Web Browser or Remote Manager.

Cause	What to do
You have not set the IP address for the network interface.	Set the IP address for the network interface using EpsonNet Config for Windows or Mac OS, or the printer’s control panel. You can check the IP address on a status sheet. See the EpsonNet Config User’s Guide.

The Model Name and IP Address do not appear in the EpsonNet Config dialog box.

Cause	What to do
If the valid IP address is not set, the model name and IP address may not appear.	Set a valid IP address. Refresh the status by selecting Refresh from the View menu. Increase the length of time before a timeout. To do this, select Options from the Tool menu, and then select Timeout . Note that doing so can cause EpsonNet Config to run slower.

Printing a Network Status Sheet

Before you start configuring the network interface, be sure to print a network status sheet that contains important information such as the current configuration and the MAC address of the network interface.

To print a network status sheet, see the printer’s *User Guide*.

Tips for Administrator

Setting an IP Address on the Printer's Control Panel

After connecting the printer to the network, you need to set the IP address for the network interface. For information on using the printer control panel to enter the IP address, subnet mask, and default gateway, see the printer User's Guide.

Secure Communication Using IPsec, Access Control, SSL, and IEEE 802.1X

Some printers may not support secure communications using IPsec, Access Control, SSL and IEEE802.1X. For information on whether your printer supports these secure communications features, see the printer User's Guide.

	IPsec	Access Control
Data format	Encrypted data	Unencrypted data
Supported operating systems	Windows 8.x/7/Vista	All operating systems supported by this product

IPsec protocol

IPsec is a protocol that is suitable for securing IP communication by encrypting the data or by authenticating client users in a network. To use this function, make the necessary settings on your printer using Remote Manager. Security settings on the client computers on the network are also required. For more information, see "Secure Communications (IPsec/Access Control)" on page 49.

Access Control

Access control function allows you to restrict network access to the printer.

- Restrict access to the printer from specified client users only
- Restrict data communication to the printer to specified purposes only (such as accessing administrative information by the administrators)

To use this function, make the necessary settings on your printer using Remote Manager. For more information, see “Secure Communications (IPsec/Access Control)” on page 49.

SSL

SSL prevents unauthorized external access or other malicious acts such as data being read while the product is connected to a network. Enabling SSL allows product settings to be managed securely via a web browser. For more information, see the online help for Remote Manager.

IEEE 802.1X

IEEE 802.1X is the standard protocol for allowing client users to be authenticated to the network before obtaining a connection. It provides effective access control to both wired and wireless networks.

IEEE 802.1X network consists of an authentication server (RADIUS server) and authenticator (switching hub with authentication function). Supplicants (devices such as printers) can join the IEEE 802.1X network by being authenticated by the authentication server and authenticator.

To print via an IEEE 802.1X network, you have to make the necessary network settings using a computer that is not connected to the IEEE 802.1X network before connecting the printer to the IEEE 802.1X network.

1. Connect the printer and computer, which is not connected to the network, using an Ethernet cable.
2. Assign an IP address to the printer and print the network status sheet to confirm the IP address.
3. Start Remote Manager on the computer and import the digital certificate, then make the IEEE 802.1X settings and other necessary settings.
4. Turn off the printer and disconnect the printer and computer.
5. Connect the printer to the destination IEEE 802.1X network and turn it on, then print the network status sheet to confirm the settings.

For details on the settings, refer to the Remote Manager help.

Secure Communications (IPsec/Access Control)

This feature prevents unauthorized external access, spoofing, or other malicious acts such as data theft or falsification while the product is connected to a network.

Enabling IPsec/Access Control allows the following tasks to be performed securely:

- ❑ Network printing
- ❑ Managing settings via a web browser

Some printers may not support secure communications using IPsec/Access Control. For information on whether your printer supports these features, see the printer manual. This document provides sample IPsec/Access Control configurations and information on setup and troubleshooting.

Overview and Sample Settings

IPsec and Access Control are configured differently and use different connection types. Review the sample settings and choose a configuration suited to your objectives.

	IPsec	Access Control
Data format	Secure (encrypted)	Not secure (unencrypted)
Supported operating systems	Windows Vista, Windows 7, Windows 8.x, Windows Server 2008, Windows Server 2012	All operating systems supported by the printer
Configuration	Configure both product and client.	Configure product only.
Sample settings	Sample 1: Accept IPsec only	Sample 2: Accept print data only Sample 3: Accept specified data types only

Sample 1

The product accepts from the client only data secured using IPsec. Normal data (i.e. data not secured using IPsec) are not accepted.

Sample 2

The product accepts print data from specific clients only. Data from other clients and non-print data from the specified clients are not accepted.

Sample 3

The product accepts only specific types of data from specific clients. In this example, security levels are set separately for each client type so that the product accepts all data from administrator clients (including product management and print data) but only print data from print clients and no data at all from other clients.

Product Security Policies: An Overview

- ❑ You can create one Default Policy and Group Policy 1-10.
- ❑ If there is more than one policy, the product will check the policies in order from the top of the display (“Group Policy 1”) and initiate a network connection when it finds a matching policy.
- ❑ Because the product checks the policies in order from the top, more restrictive policies should precede the more general policies on which they are based.

Configuration Workflow

IPsec requires a client with secure access to the product and configured according to your purposes. Access Control requires that the product be configured according to your purposes.

The configuration workflow is shown below.

Note:

If your network is already secure, we recommend that you connect the product to a computer on a different network before adjusting settings. There is potential for data theft if the product is connected to a secure network when settings are adjusted. If no other network is available, refer to the “Encrypting communications” below.

1. Connect the product and the computer that will be used to configure the product to the network.
2. Adjust Remote Manager settings.

See the following page information on Remote Manager settings.

3. Transmit the settings to the printer.*
4. Adjust client computer security settings (not required for Access Control).
5. Connect the printer to a secure network.

* **Encrypting communications:** There is potential for data theft if product settings are adjusted over a secure network. If no other network is available, follow the steps below to encrypt the data for transmission.

(1) In the product control panel, select **Network Setup > IPsec Setting > Enable** and enter the pre-shared key.

(2) Set up IPsec on the computer that will be used to configure the product.

(3) Connect the product and the computer that will be used to configure the product to the network.

Important:

The network connection will close if **Network Setup > IPsec Setting** is enabled in the product control panel and a blank key is entered for **PSK Setting** (i.e. no pre-shared key is entered). Be sure to enter a key for **PSK Setting** after enabling **Network Setup > IPsec Setting** in the product control panel.

Product Security Policies

Start the product Remote Manager from your computer, open the **Setup** tab, and adjust **Security > IPsec/Access Control** settings for security policies that match how the product will be used.

Note:

We recommend that the product be assigned a static IP address for secure access using IPsec or Access Control. Settings will be invalidated if the IP address changes.

Sample 1

Open the **Setup** tab in Remote Manager and configure **Security > IPsec/Access Control > Default Policy** settings as follows:

Option	Setting
IPsec/Access Control	Enable
Default Policy > Access Control	Use IPsec
Pre-Shared Key	Enter a key (maximum 127 alphanumeric characters)

Sample 2

Open the **Setup** tab in Remote Manager and configure **Security > IPsec/Access Control > Group Policy** settings for each client.

Refusing Access from Unauthorized Clients

Open the **Setup** tab in Remote Manager and configure **Security > IPsec/Access Control > Default Policy** settings as follows:

Option	Setting
IPsec/Access Control	Enable
Default Policy > Access Control	Access Refuse

Print Client Settings

Separate **IPsec/Access Control > Group Policy** settings must be created for each of the **Service Name > RAW (Port 9100)**, **ENPC**, ¹ and **SNMP** options as shown in the example below. Group policies are applied in order from Group Policy 1.

Option	Setting		
	RAW (Port 9100)	ENPC	SNMP
Group Policy n (n = 1–10)	Enable		
Access Control	Access Permission		
Remote Address (Host) ²	Enter the print client IP address (prefix length can be used to specify range if desired). Example (IPv4): 192.168.0.0/24		
Method of Choose Port	Service Name		
Service Name	RAW (Port 9100)	ENPC	SNMP

1. An Epson protocol used by Epson printer and scanner drivers and such applications as EpsonNet Config to find the printer.

2. A static IP address is recommended. If DHCP or “obtain automatically” (IPv6) is selected, the connection may terminate when the lease or address expires.

Note:

Select **TCP** or **UDP** for **Protocol** when **Local Port** is selected for **Method of Choose Port > Port Number**.

Sample 3

Open the **Setup** tab in Remote Manager and configure **Security > IPsec/Access Control > Group Policy** settings for each client.

Refusing Access from Unauthorized Clients

Open the **Setup** tab in Remote Manager and configure **Security > IPsec/Access Control > Default Policy** settings as follows:

Option	Setting
IPsec/Access Control	Enable

Option	Setting
Default Policy > Access Control	Access Refuse

Administrator Client Settings

Separate settings must be created for each **Group Policy** in **IPsec/Access Control**. Group policies are applied in order from Group Policy 1.

Option	Setting
Group Policy n (n = 1–10)	Enable
Access Control	Access Permission
Remote Address (Host) *	Enter the administrator client IP address

* A static IP address is recommended. If DHCP or “obtain automatically” (IPv6) is selected, the connection may terminate when the lease or address expires.

Print Client Settings

Create separate settings for each of the **Service Name > RAW (Port 9100)**, **ENPC**, ¹ and **SNMP** options using **Setup > Security > IPsec/Access Control > Group policy** settings that differ from those used by the administrator. Group policies are applied in order from Group Policy 1; when setting up policies for both administrators and print clients, order the list so that the group policies for administrators precede those for print clients.

Note that EpsonNet Config (Windows/OS X) will be unable to detect the printer if separate group policies are not created for the **Service Name > ENPC, SNMP** options.

Sample settings are shown below.

Option	Setting		
	RAW (Port 9100)	ENPC	SNMP
Group Policy n (n = 1–10)	Enable		
Access Control	Access Permission		
Remote Address (Host) ²	Enter the print client IP address (prefix length can be used to specify range if desired). Example (IPv4): 192.168.0.0/24		
Method of Choose Port	Service Name		
Service Name	RAW (Port 9100)	ENPC	SNMP

1. An Epson protocol used by Epson printer and scanner drivers and such applications as EpsonNet Config to find the printer.

2. A static IP address is recommended. If DHCP or “obtain automatically” (IPv6) is selected, the connection may terminate when the lease or address expires.

Note:

Select **TCP** or **UDP** for **Protocol** when **Local Port** is selected for **Method of Choose Port > Port Number**.

Supported Security Methods

The product supports the security methods listed below; choose one of these combinations when selecting the computer security method. In most cases computers can use default IPsec settings.

Security method	Option
Authentication algorithm	SHA-256 SHA-1 MD5
Encryption algorithm	AES-CBC 256 AES-CBC 192 AES-CBC 128 3DES DES
Key exchange algorithm	Elliptic Curve Diffie-Hellman P-384 Elliptic Curve Diffie-Hellman P-256 Diffie-Hellman Group 14 Diffie-Hellman Group 2 Diffie-Hellman Group 1